

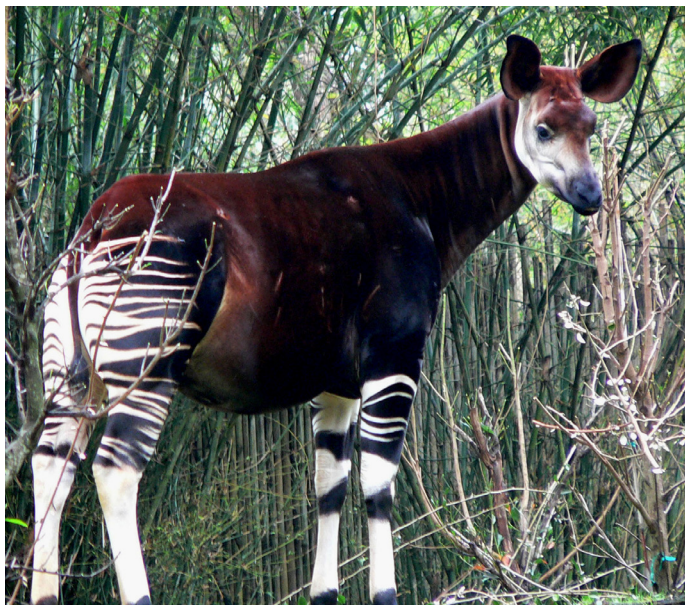
# Giraffes and Okapis

## GIRAFFES

A giraffe is the tallest land animal. A male giraffe, also known as a bull, can be up to 18 feet tall! A female giraffe, also known as a cow, can be up to 15 feet tall. Giraffes have long necks and long legs. They are a light tan color, with brown spots all over. Because of their long necks, giraffes are able to eat foliage, or leaves, that are far off the ground. Giraffes also use their long necks to battle with one another. Bulls fight for the opportunity to reproduce. Lions, crocodiles, and humans are the only other animals that hunt giraffes. To defend themselves, they can run or kick. Giraffes can run up to 35 miles per hour. They also live within a group of other giraffes, which helps provide protection.



## OKAPI



An okapi will catch your eye when you see it for the first time. It has black and white stripes on its hind end and front legs. They might remind you of a zebra at first. When you look closer, you will notice that its head looks a lot like a giraffe's. The question then becomes: which animal is the okapi related to? The okapi is a cousin of the giraffe! Along with the similar head, the okapi's tongue is just like a giraffe's. The okapi eats similar foliage as the giraffe. Okapis are very sensitive animals. They live deep in the rainforest, and their sensitive ears help them avoid people. The okapi typically lives alone with the exception of a mother and her

babies. Another difference between the giraffe and okapi is its height. The okapi does not have a long neck or tall legs.