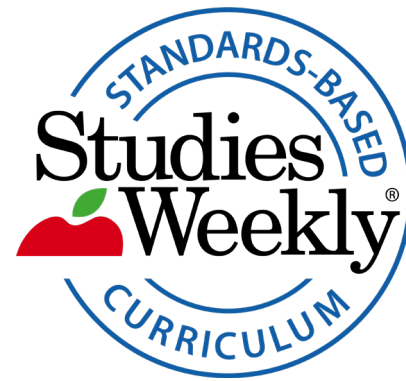


Product
Guide

2022
EDITION



CORE Curriculum

Aligned to Standards



BECAUSE THE **BEST**
THINGS COME IN
SMALL PACKAGES

Contents

Curriculum

Social Studies	2
Science	4
Well-Being	6
ELA/Summer School	7

Theory of Action

Social Studies	8
Science	9
Well-Being	8

Critical Issues 10

How to Use Studies Weekly

Print	12
Online	14
Print and Online Integration	17

Educator Support 18

Pricing and Bundles 21

Why Studies Weekly is **CONSUMABLE**



STUDIES WEEKLY



TEXTBOOKS

CORE CURRICULUM



STUDENTS CAN WRITE ON IT



UNITS CAN BE REARRANGED ACCORDING
TO TEACHER NEED



WRITTEN SPECIFICALLY FOR YOUR STATE
WITHOUT UNNECESSARY CONTENT



ACCESSIBLE 1 UNIT AT A TIME



CAN BE FOLDED, CUT, GLUED AND MADE
INTO PROJECTS



WORKS FOR FEDERAL FUNDING



HIGHLY ADAPTABLE TO REMOTE LEARNING



TAKES UP LESS CLASSROOM SPACE



TAKES UP LESS ROOM IN A BACKPACK



STUDENTS CAN KEEP THEM



OVERWHELMING



HEAVY



LESS EXPENSIVE!



GET A QUOTE TODAY!

[STUDIESWEEKLY.COM/GET-A-QUOTE](https://studiesweekly.com/get-a-quote)

K-5+ Social Studies

A **core** Social Studies curriculum that encourages students to become engaged and responsible citizens who think critically and make informed decisions



IMAGES, ILLUSTRATIONS, INFOGRAPHICS, AND MAPS HELP STUDENTS EXPLORE CONCEPTS

Our Community 3 Studies Weekly WEEK 2 PEOPLE AND PLACES

Thinking Like a Historian

Primary and Secondary Sources

How Do We Examine Sources?

Author/Creator

- Who is the author or who made the source?
- What was their role in the event or situation?
- Are they a primary source or a secondary source?

Purpose

- When was the source created?
- Why was the source made?
- Was the source made around the time of the event or much later?
- Is the source trying to persuade, inform, or entertain?

Format

- How was the source created?
- What was it made of?

Multiple Perspectives

Everyone is different and has a unique perspective, or way of seeing things. Experiences and events may be interpreted differently by people. People have different cultural or individual perspectives. It is important to understand the perspectives of others. When we look at multiple perspectives, we can have a deeper understanding of what happened in the past. This helps us create the most accurate analysis of the people and events of history.

For Children in the 1920s

What was life like for children 100 years ago? Think like a historian. Look at some source images and see what you can discover.

Work

In the 1920s, not all children went to school. There were no laws that said children had to go to school. In fact, many young children worked to help their families.

Some worked in cotton mills. These were big factories that made fabric from cotton. Many young children worked in these factories.

What do you notice about the children in the photos?

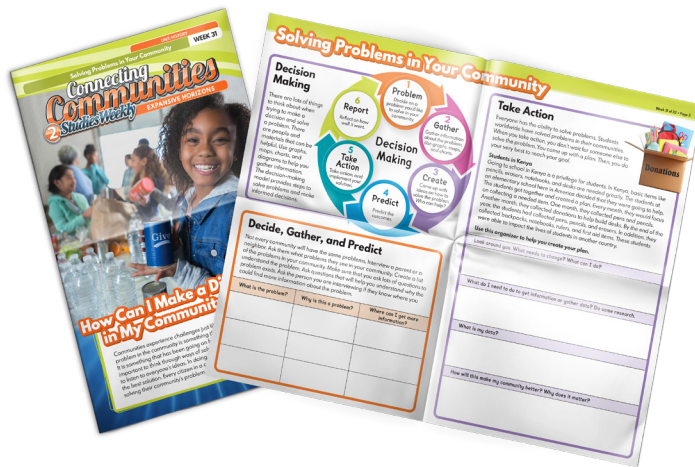
CELEBRATES ALL VOICES

LEXILED TEXT FOR GREATER READABILITY, ACCESSIBILITY, AND DIFFERENTIATION

PRIMARY SOURCES STUDENTS CAN EXAMINE AND ANALYZE



SEE SAMPLES FOR YOUR STATE!
S-W.CO/STATE-SAMPLES



ENGAGE ALL STUDENTS

In history, geography,
economics, civics,
and government

Model skills of **INQUIRY**

Through integrated discussions and lesson plans
where students evaluate evidence, make
conclusions, and take **ACTION**



AVAILABLE IN SPANISH!

K-5 Science

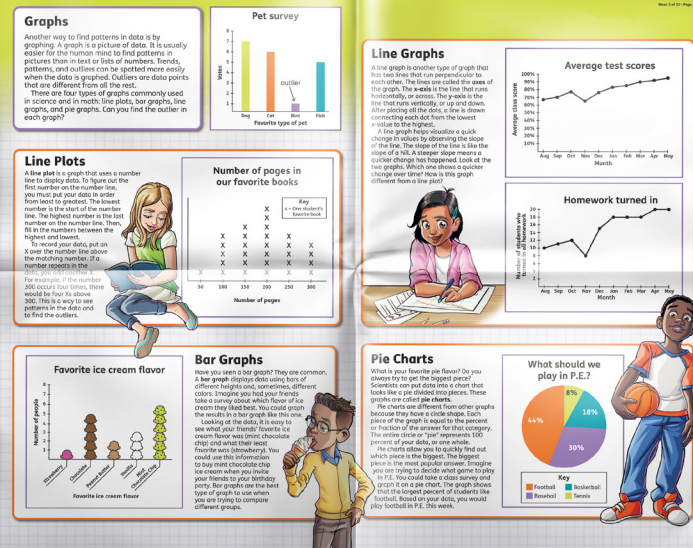
A **core** Science curriculum based on the 5E Model and aligned with national and state frameworks



GRADE-LEVEL LEXILED



SCAFFOLDED KNOWLEDGE AND SKILLS



HANDS-ON



DOMAIN-SPECIFIC VOCABULARY

ENGINEERING AND DESIGN PRACTICES

ELA AND MATH INTEGRATED

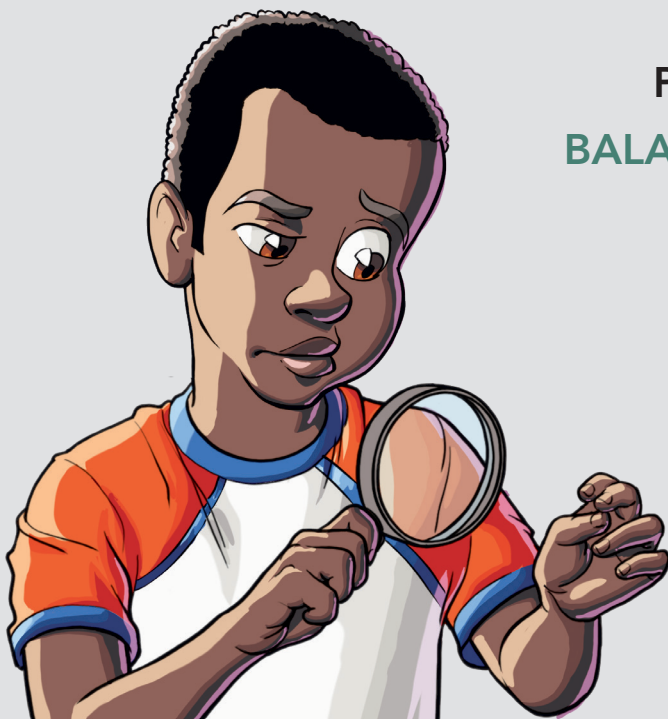


SCAN ME

SEE SAMPLES FOR YOUR STATE!
S-W.CO/STATE-SAMPLES

OBSERVE. CONNECT. ANALYZE.

Use the world around your students to provoke curiosity and inspire them to solve real problems using data



Phenomenon-driven units with a **BALANCE** of informational text skills and experiential learning:

Crosscutting Concepts
Integrated Core Ideas
Real-World Examples
ELA Integration
5E Model

AVAILABLE IN SPANISH!



PK-6 Well-Being

A Tier 1, 2, and 3 wellness resource to help you teach and support growth mindset skills

Help students **THRIVE** as they learn and explore

Responsible Decision Making
Managing Emotions
Stress Management
Self-Regulation
Collaboration
Perseverance
Goal-Setting
Resilience
Empathy

Social and Emotional Resilience




Social resilience allows us to be successful. When we are successful, we feel more confident. Our minds can focus on positive things. This helps us respond appropriately to what happens around us.

Learning to manage emotional responses every day. This helps us understand our feelings. It helps us understand others.


The Benefits of a Growth Mindset

A growth mindset improves your well-being. It keeps you focused on your progress. Sometimes, your growth is right under the surface, like the roots of a plant. It might not be visible YET.



What Does Empathy Look Like?

We try to show empathy when we look at the world around us. We try to see things from the point of view of another person. First, we try to listen without judging the other person. Next, we try to see what another person is seeing. Then, we try to feel what that person is feeling. Finally, we develop empathy for someone when we try to understand what they are going through or feeling. The goal is to observe and infer.

EMPATHY MAP			
Think and Feel? What really matters? Worries/aspirations?		See? Environment Social Media Websites Magazines What the markets offer	
Hear? What friends say What family say What boss/peers say What influencers say		Say and Do? Appearance Attitude in public	Gains Wants/needs Measure of success Goals
Pains Fears Frustrations Obstacles			

Available soon
in Spanish!

SEE SAMPLES FOR YOUR STATE!
[S-W.CO/STATE-SAMPLES](https://s-w.co/state-samples)



ELA/Summer School

Reinforce literacy skills with a Grade 2-5 Extended Learning curriculum that provides additional support for **ALL** students who need additional learning time

4 weeks of learning to use **ANYTIME**



ADAPTABLE FOR TEACHER-GUIDED
OR STUDENT-GUIDED INSTRUCTION



STUDENTS USE ALL
4 LITERACY DOMAINS

NO VISIBLE GRADE BANDS SO STUDENTS FEEL
COMFORTABLE WORKING AT THEIR READING LEVEL

STUDENTS WRITE ON
THE PUBLICATION



SCAN ME

SEE INTERACTIVE SAMPLES
S-W.CO/ELA

Available soon
in Spanish!

ELA/SUMMER SCHOOL

Social Studies

Each state social studies edition is highly customized to reflect the standards and approach of that state. Usually, state standards are based on the C3 framework and use inquiry to guide students through the domains of social studies. Studies Weekly begins with the state standards, frameworks, and guiding documents to reflect the approach, topics, and unit organization of those standards.

Each publication is built upon primary and high-quality secondary sources in images, historical documents, and data, using grade-level appropriate chunks of information to scaffold and focus student research. Sources are contextualized in foundational concepts, guided evaluation, and application. For grade levels that study state history and apply the domains of social studies at a state level, we work with local experts to provide general domain knowledge of geography, civics and/or government, economics, and history with a throughline of culture as applicable.

In addition to visually engaging articles and primary source materials, the Teacher's Edition provides article-by-article lesson plans based on Hattie and Marzano's high-impact teaching strategies. It also incorporates the research-based methodologies of John Lee, Kathy Swan, S.G. Grant, Timothy Shanahan, Douglas Fisher, Nancy Frey, Carol Ann Tomlinson, and others.

Article-level assessments include text-dependent questioning to measure engagement and understanding, while weekly assessments measure standards-based concepts. Lesson plans include activities and opportunities for writing, speaking, and listening to ensure depth of knowledge and application of concepts.

Well-Being

Studies Weekly's research-based and preventative behavioral health curriculum helps students and teachers manage their response to global stressors and unique challenges.

This PreK-6 wellness and life skills program is designed for Tier 1 instruction, but it can also be used for targeted Tier 2 and Tier 3 interventions. The flexible design allows teachers and school counselors to work with small groups or individual students to reinforce learning.

This program utilizes synthesized psychological and behavioral frameworks, including Maslow, Piaget, Vygotsky, and other current research. Additionally, the curriculum uses the Yale RULER program frameworks to increase emotional intelligence.

Science

Studies Weekly has created a complete science program aligned with the Next Generation Science Standards. It also incorporates the well-known 5E model for those who prefer that instructional approach.

Student-relevant phenomenon drives instruction. Each lesson begins with an observable event, sparking questions about how and why, so students organically learn to make sense of natural phenomena.

Weekly lessons also align to performance expectations while supporting the K-12 Framework's 3D approach to learning. Lessons include formative assessment questions, with a weekly summative assessment of 3D learning and student performance.

This approach engages students much better than traditional science instruction because doing science is the best way to learn science. We emphasize age-appropriate hands-on learning as an integral element of all curriculum levels.

Engineering is very prominent in this curriculum and is featured throughout K-5. Students learn through dedicated engineering weeks in early grades, while upper-grade students experience integrated science and engineering practices and crosscutting concepts throughout weekly lessons.

Nonfiction articles also give students a literacy approach to science and help contribute to making sense of the driving questions they derive from the anchoring phenomenon, with embedded and relevant writing prompts.

Studies Weekly Well-Being also includes instructional support for Multi-Tiered Systems of Support (MTSS), Assertive Discipline, Behaviorist and Humanist theories, and Positive Behavior Intervention Support (PBIS) frameworks to support classroom management and a positive school climate. Please note that this curriculum does **NOT** include Critical Race Theory (CRT) instruction.

Lesson plans include instructional strategies such as visualization, cooperative learning, behavior management, gamification, experiential learning, project-based learning, peer mentoring, and inquiry-based learning.

Within 32 weeks, students explore and develop skills in self-awareness, self-management, social awareness, relationships, and good decision making.

Studies Weekly's Well-Being curriculum strengthens students to face their current challenges and empowers them to shape a positive portrait of their future.

CRT

Critical Race Theory, also known as CRT, describes a legacy of discrimination and racism in American history. Studies Weekly's curriculum does **NOT** include CRT.

While CRT is not a curriculum or program, school boards across the nation have experienced protests for and against the theory. Educators may feel caught in the middle of this debate and wonder if their curriculum will address Critical Race Theory.

Studies Weekly does **NOT** take a stance regarding what should or should not be included in your curriculum. We leave those decisions up to your Department of Education.

If your state's Department of Education adds Critical Race Theory components into its standards, then Studies Weekly will update your curriculum in the next edition, after notifying all customers and clearly identifying the publication(s) containing it, so educators can make informed decisions.

Our goal is to continue providing accurate and engaging social studies, science, well-being, and other curriculum that is fully aligned to your state's standards.

Indigenous People

The multi-tribal designation is one that the curriculum experts at Studies Weekly have long debated. In 2019 and 2021, we discussed the topic once again and then reached out to tribal leaders and tribal organizations for their preferences.

Whenever possible, most prefer to be called by their specific tribal name, and when referred to as a multi-tribal group, prefer the terms American Indian or Indigenous People.

Based upon those conversations, and the fact that the U.S. Federal Government only allows tribal government status for those formally recognized as American Indians, we use the terms Indigenous People, Native American, and American Indians interchangeably, when referring to more than one tribe in a collective group. If a state's standards have a preference for one term, we align with that.

Studies Weekly is committed to celebrating all students. The beautiful diversity of their experiences is an asset to all communities and should be nurtured. All students should have a culturally authentic mirror of themselves in the classroom, especially those who are under-served and under-represented. Additionally, all students benefit when they are given access to windows into other cultures and value systems.

Studies Weekly continually works with school administrators, teachers, and parents to review, re-examine, and update the materials we provide for instruction and professional development. We have engaged with state experts to consult on our guiding documents to unpack the standards and interpret the framework in a culturally responsive fashion.

Additionally, we consult with cultural studies experts, subject matter experts, and diverse contributors to support us as we provide culturally authentic materials. We seek to widen the context of each narrative and contextualize individual stories that give an understanding of cultural identity without incurring stereotypes or conglomerate representations.

Representation

We believe all students should feel welcome in their curriculum and have an entry point into learning. To this end, we provide extensive scaffolding and access for those who are differently abled through accommodations such as: screen readers, multimedia content, and lessons that incorporate multiple learning modalities. Lesson plans include embedded ideas for differentiating instruction based on content, process, and product.

Representation of diverse student populations, family situations, and locations help all students see themselves in the publications and see positive representations of groups other than their own.

Studies Weekly's content is carefully presented according to standards and based on facts, while avoiding shaming, exclusion, or erasure of any population, whether dominant or minority. We seek to provide a positive and wholesome learning environment for all students.

SORTING Student Editions

In order to save you money, and because of the uniquely consumable nature of Studies Weekly, we must print multiple units on one printing plate. This means the Student Edition is shipped to you in a classroom set that needs to be collated.

As you separate publications, you can sort them by themes, units, or according to your teaching plan. You then can give your students just one publication at a time during instruction.

Ideas for Sorting

1

1. Put your students in a circle
2. Assign them each a week to find in the SE
3. One student starts by pulling out Week 1, then passes the rest to the student in charge of Week 2, etc.
4. Gather papers by weeks, clip together



2

2. Give older students a service opportunity and ask them to sort



3

3. Ask a parent helper to sort



WHILE IT MAY TAKE A LITTLE TIME INITIALLY TO SEPARATE THE PUBLICATIONS, HAVING THE ABILITY TO FILE EACH WEEK SEPARATELY CAN ACTUALLY SAVE TIME IN THE LONG RUN. IT'S "ONE AND DONE" AND THEY ARE READY TO GO FOR THE YEAR.

Using PRINT

IMAGES

HELP STUDENTS
VISUALIZE ABSTRACT
CONCEPTS

BOLDED VOCABULARY

STRENGTHENS
COMPREHENSION



CLOSE READING

STUDENTS HIGHLIGHT
MAIN IDEAS AND
SUPPORTING DETAILS

WRITING

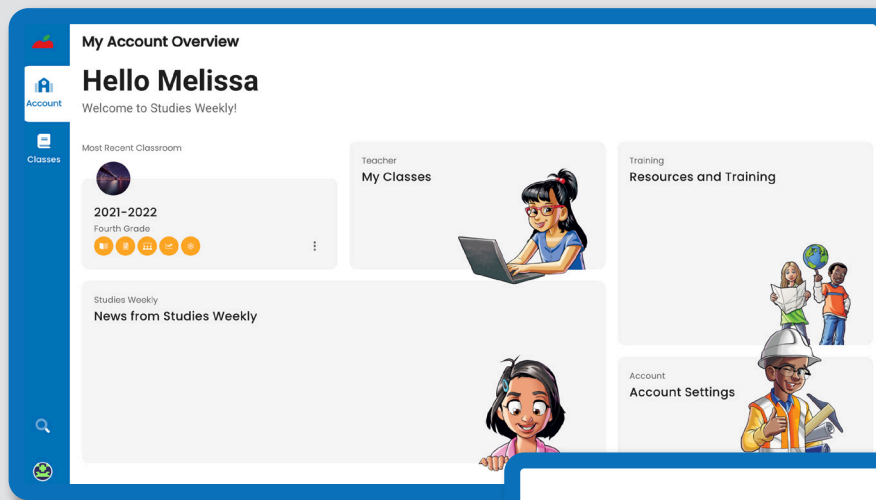
STUDENTS HAVE ROOM
TO RECORD NOTES AND
COMPLETE ACTIVITIES

HOW TO - PRINT

Find teaching strategies, lesson plans, graphic organizers, assessments, and activities in your **Teacher Edition**

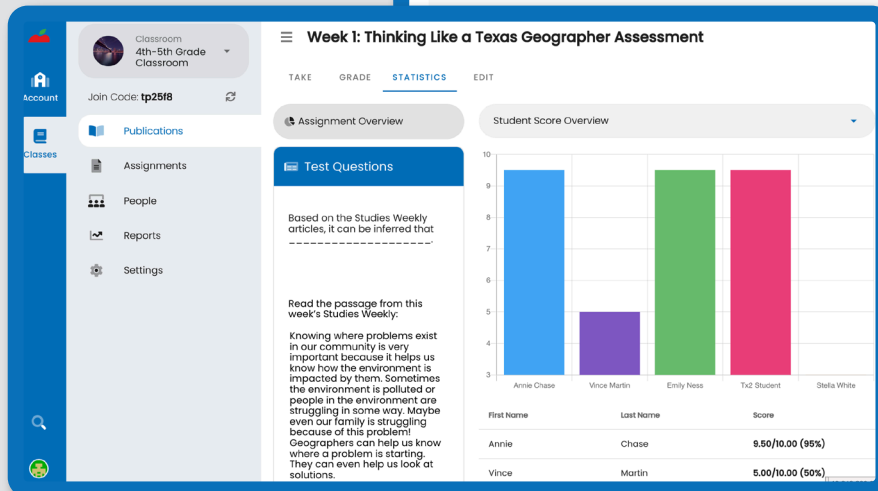
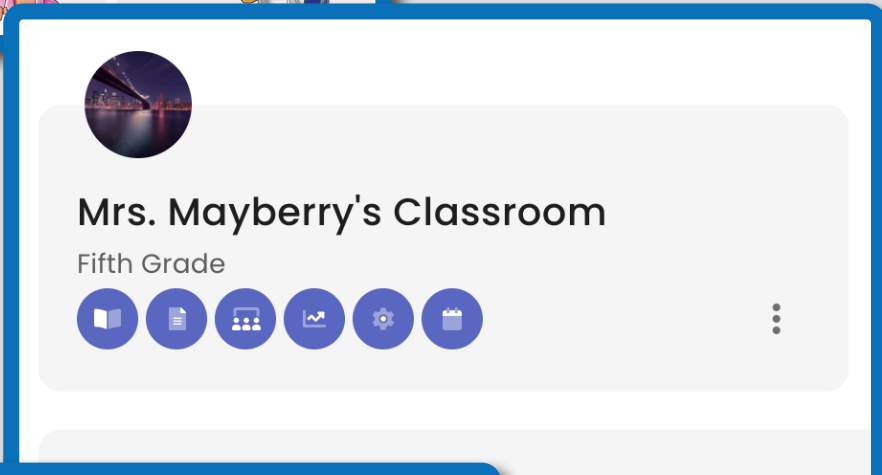
STUDIES WEEKLY ONLINE

The new Studies Weekly Online is more user-friendly, built with teacher feedback, and ready for digital-first learning. Similar to popular LMS platforms, the fresh format makes it easier to find lesson plans, videos, and activities; and appeal to all student learning styles.



NEW HOME PAGE HELPS YOU NAVIGATE BETWEEN CLASSES, PUBLICATIONS AND STUDENTS

UPDATED NAVIGATION MAKES IT EASIER TO FIND ARTICLES THAT CORRELATE WITH THE PRINTED CURRICULUM



MONITORING STUDENT PROGRESS IS SIMPLER AND AVAILABLE WITH JUST A FEW CLICKS

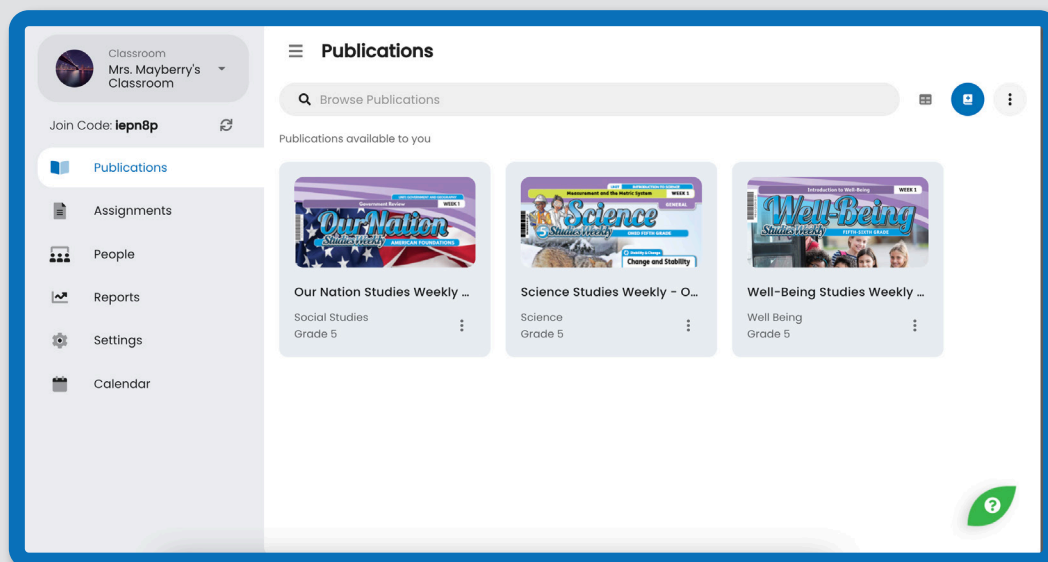
GETTING STARTED Online

1. Visit studiesweekly.com/online
2. Sign up for a Free Trial or Log In

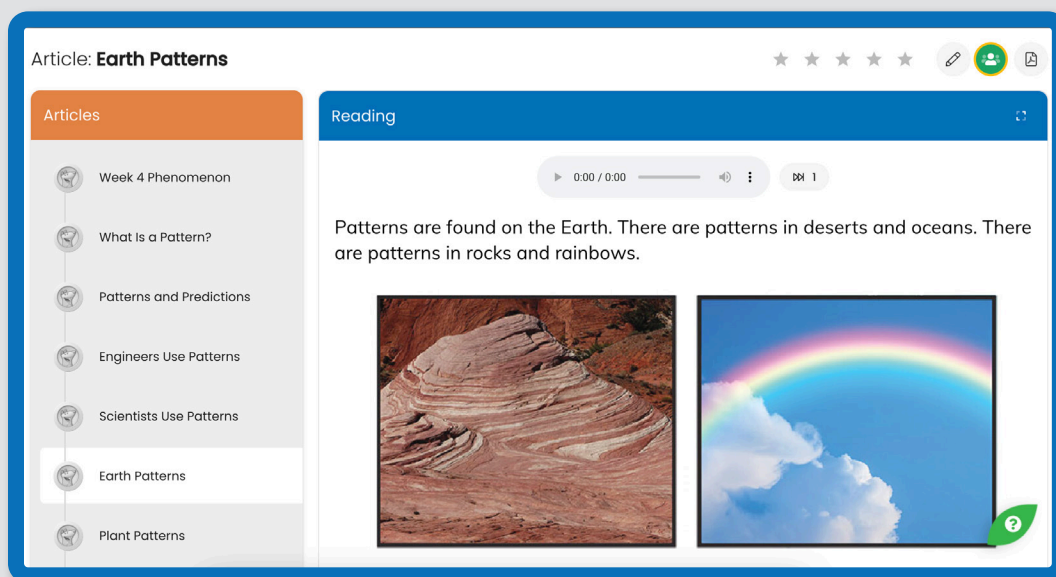
NOTE: IF YOUR SCHOOL OR DISTRICT ORDERS STUDIES WEEKLY FOR YOU, THEY MAY USE A ROSTERING PROCESS TO CREATE YOUR ONLINE LOGIN. PLEASE CHECK WITH YOUR SCHOOL OR DISTRICT.

CLASSES TAB

MANAGE PUBLICATIONS,
ARTICLES, ASSIGNMENTS,
AND STUDENTS



ARTICLE VIEW



- ASSIGN WITH GOOGLE CLASSROOM
- USE AUDIO READER FOR COMPREHENSION
- VIEW RELATED MEDIA
- HIGHLIGHT AND ANNOTATE TEXT

HOW TO - ONLINE

Online **NEXT STEPS**

Create a Class



Add
Publications



Add Students



Explore
Articles



Use Audio



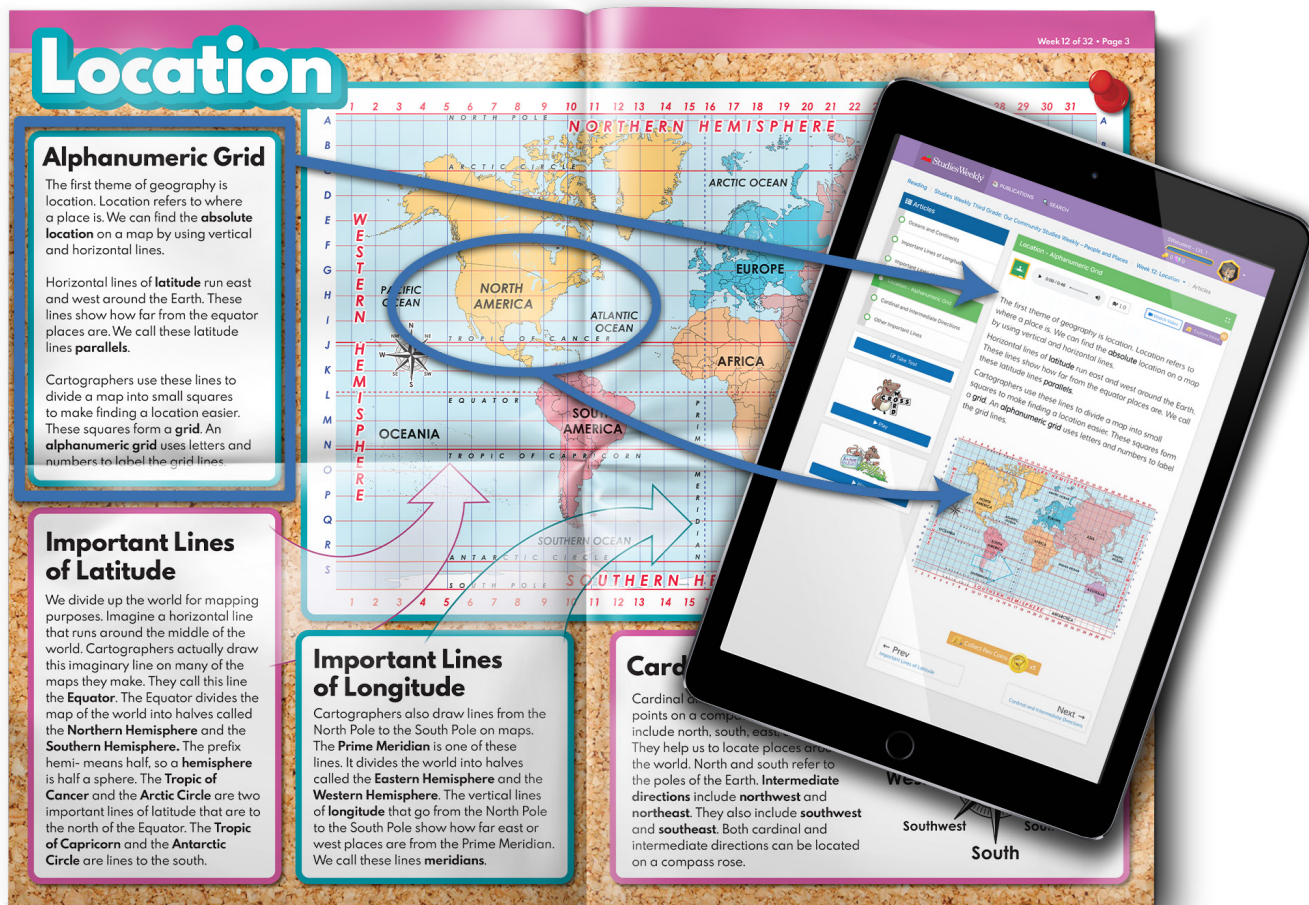
Measure
Growth



SEE HOW
STUDIESWEEKLY.COM/TUTORIALS

PRINT & ONLINE Integration

Every publication is available in print and online so students and teachers can smoothly transition between learning environments. The digital platform includes the same articles, images, and illustrations as print, with additional audio and video resources, so students feel comfortable accessing learning on their own terms.



THIS INTEGRATED LEARNING APPROACH ACCOMMODATES TIGHT LESSON SCHEDULES SO STUDENTS CAN TRULY ENGAGE IN LEARNING

PRINT & ONLINE INTEGRATION

Paired materials provide **MULTIPLE ACCESS POINTS** to learning for use **ANYTIME, ANYWHERE**

Customized PD

All sessions can be customized to fit your needs by:

- content area
- grade level
- instructional focus
- mode of delivery
- audience
- learning outcomes



Onboarding

Introductory sessions provide educators new to Studies Weekly with initial training and a guided tour of the print and online publications

Prerequisite for intermediate or advanced sessions



Instructional Modeling

Intermediate/advanced sessions provide instructional modeling to engage in hands-on experiences with the print and online publications



Train the Trainer

Intermediate/advanced sessions provide teacher leaders with professional development coaching in Studies Weekly



Curriculum Coaching

Sessions for administrators and curriculum teams to provide support aligning Studies Weekly publications with local curriculum for sustained implementation

PD Pricing

WEBINAR	FACE-TO-FACE	REGIONAL EVENTS
WEBINAR SESSION (UP TO 2 HOURS) \$500/SESSION	F2F TRAINING (UP TO 6 HOURS) \$2,000/DAY <small>MUST BE COMPLETED IN A SINGLE DAY</small>	REGIONAL EVENTS (UP TO 6 HOURS) \$3,000+/DAY <small>AVAILABLE FOR SCHOOLS/DISTRICTS TO COLLABORATE WITH OTHERS</small>

Free PD included with qualifying contract purchase levels

\$25K–\$50K 1 DAY OF TRAINING	\$50K–\$100K 1 DAY OF TRAINING + 1 WEBINAR	\$100K–\$150K 2 DAYS OF TRAINING + 1 WEBINAR
\$150K–\$200K 2 DAYS OF TRAINING + 2 WEBINARS	\$200K–\$300K 3 DAYS OF TRAINING + 2 WEBINARS	\$300K–\$400K 3 DAYS OF TRAINING + 3 WEBINARS
\$400K–\$750K 4 DAYS OF TRAINING + 4 WEBINARS	\$750K+ 5 DAYS OF TRAINING 5 WEBINARS + CURRICULUM COACHING IMPLEMENTATION PLAN	ALL CUSTOMERS NATIONAL WEBINARS ON-DEMAND RESOURCES

A multi-year purchase means LOTS OF SUPPORT



Teacher Advocate



The Teacher Advocate is a unique offering for our multi-year district accounts. Debbie Bagley has 15+ years of in-class experience and recently retired from the classroom so she can help teachers be successful.

She is a true partner who is available via email, scheduled calls, or GoogleMeet. Your teachers can ask for assistance with lesson planning and activity ideas, or just bounce ideas off someone familiar with the curriculum.

"When Studies Weekly offered to hire me as a teacher advocate, it was hard to imagine leaving my students. But, I love the Studies Weekly's vision of engaging children in the learning process and how that empowers students," she says.

"I want all teachers to feel confident, excited, and successful in implementing curriculum so that all students reap the many benefits. This in turn will positively affect society as a whole. That is my goal."

Connect with us to customize your PD
s-w.co/pd



Single Year Product Pricing and BUNDLES

Social Studies

Science

Well-Being

ELA/Summer School

\$8.15/student⁺

\$8.15/student⁺

\$5.95/student⁺

\$4.99/student⁺

CURRENT PRICING

BUNDLE 2

PURCHASE 2 SUBJECTS IN
EQUAL INCREMENTS, GET
*2ND SUBJECT 10% OFF



BUNDLE 3

PURCHASE 3 SUBJECTS IN
EQUAL INCREMENTS, GET
*2ND SUBJECT 10% OFF
AND 15% OFF WELL-BEING

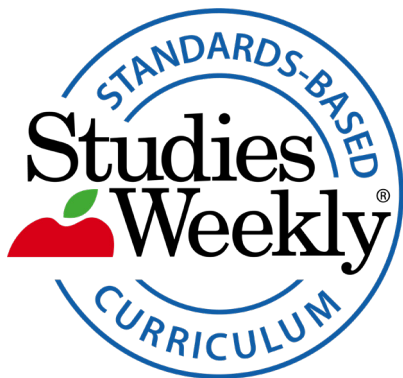


⁺ PRICE IS FOR 10 OR MORE

* 2ND AND 3RD SUBJECT MUST BE OF EQUAL OR LESSER VALUE, ELA/SUMMER SCHOOL CANNOT BE BUNDLED OR DISCOUNTED



We're here to help!
studiesweekly.com/contact
(866) 311-8734



353369

