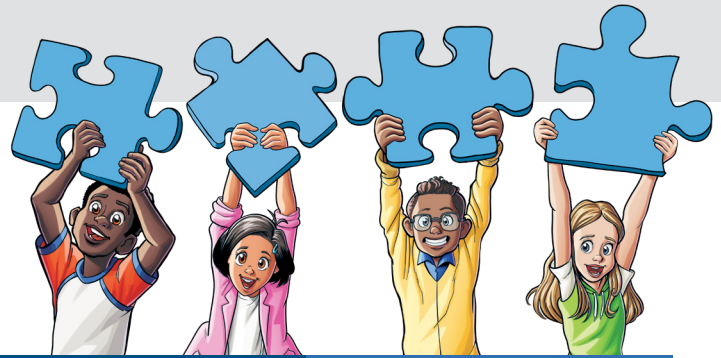


COMPREHENSIVE



| | COMPREHENSIVE | SUPPLEMENTAL |
|---|---------------|--------------|
| THE BACKBONE OF CLASSROOM INSTRUCTION | ✓ | |
| HEAVILY BASED ON EDUCATIONAL RESEARCH | ✓ | |
| ADDRESSES ALL, OR NEARLY ALL, STATE STANDARDS AND FOUNDATIONAL SKILLS | ✓ | |
| USED FOR TIER 1 INSTRUCTION | ✓ | |
| INCLUDES FORMATIVE AND SUMMATIVE ASSESSMENTS | ✓ | |
| COMPLEMENTS STUDENT MATERIALS WITH RICH TEACHER MATERIALS | ✓ | |
| MAY INCLUDE EXTRA TOPICS AND DEPTH | ✓ | ✓ |
| CAN BE USED FOR TIER 2 OR 3 INSTRUCTION | ✓ | ✓ |
| MAY INCLUDE REMEDIATION, ENRICHMENT, AND EXTENSION ACTIVITIES | ✓ | ✓ |
| HELPS A TEACHER BY DIFFERENTIATING CLASS MATERIALS TO MEET DIVERSE STUDENTS NEEDS | ✓ | ✓ |
| STUDIES WEEKLY! | ✓ | ✓ |